

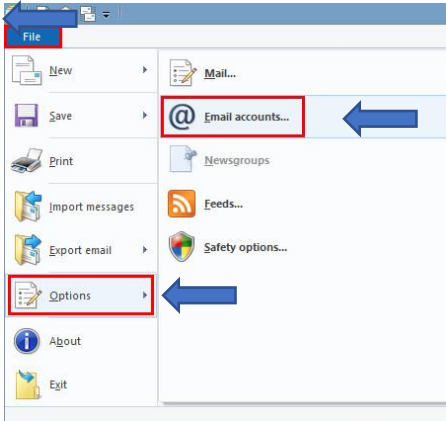
## Change email settings Windows Live mail

Open Windows Live Mail

Select File

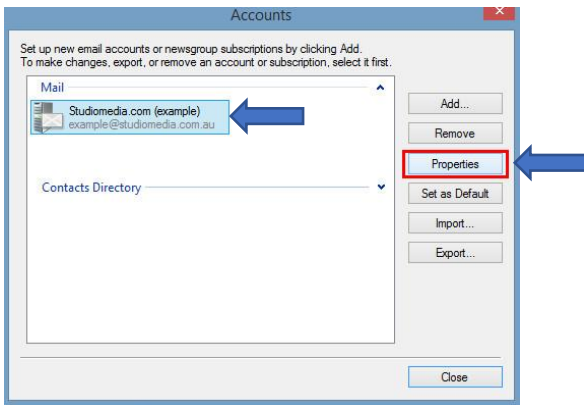
Click on options

Click on Email Accounts

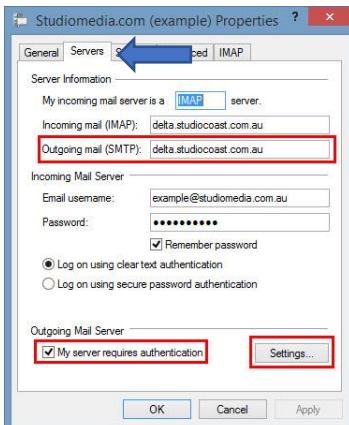


Choose your email account on the left

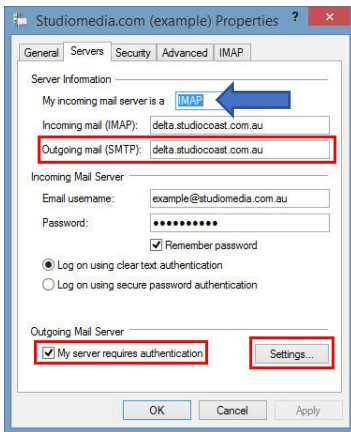
Click on Properties



Click on Servers tab at the top



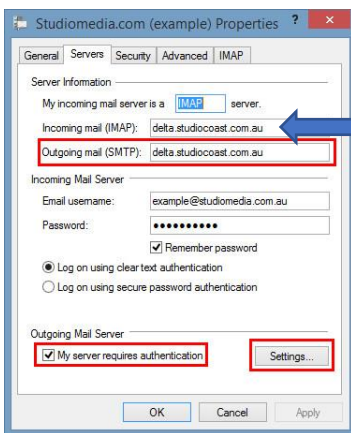
Notice what type of server you are using



Change Incoming mail to match type.

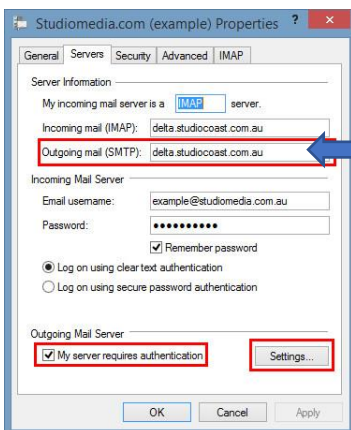
For Imap: imap.bluetie.com

For Pop: pop.bluetie.com

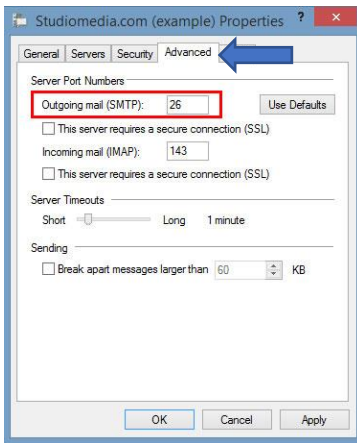


Change Outgoing mail (SMTP) to

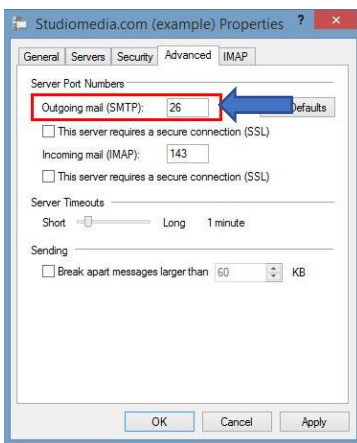
smtp.bluetie.com



Click on Advanced Tab at top of window



Change Outgoing mail port to 587



Under Incoming Mail check the box next to “This server requires a secure connection (SSL)”

Change Incoming mail port to

Imap: 995

Pop: 993

Click on Apply

Then click on OK

