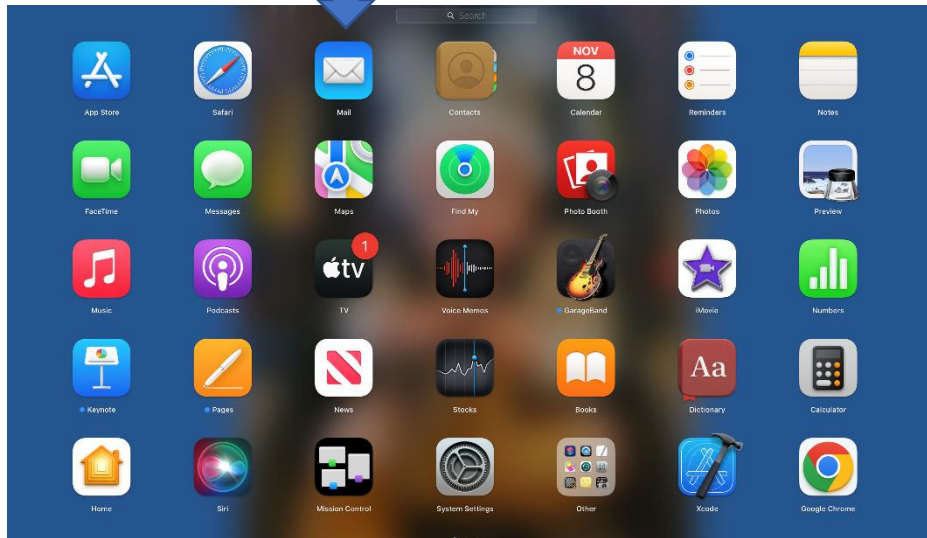
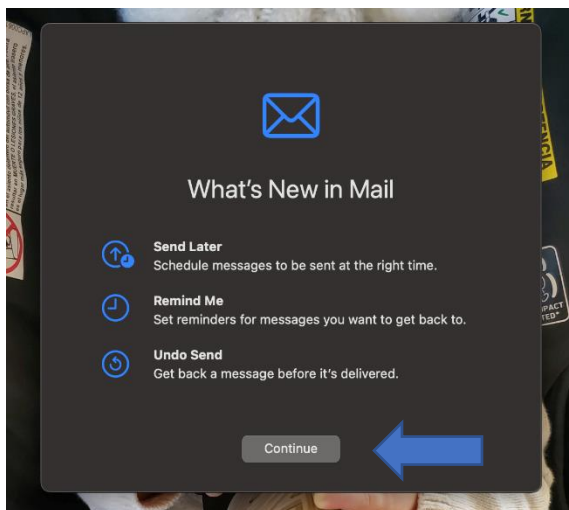


## Mac Mail Setup

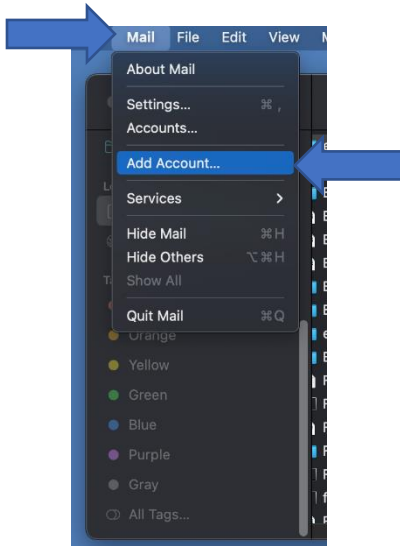
Click on the mail icon



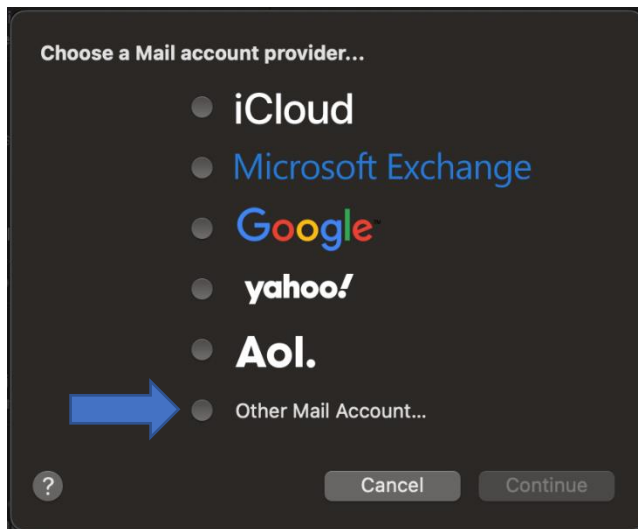
Click "Continue"



Click on "Mail" then on "Add Account"



Click on "Other Mail Account"



Type in your "Name," "Email Address" and "Password"

Click "Sign In"

**@ Add a Mail account**

To get started, fill out the following information:

Name: MTCC Inc

Email Address: techsupport@manti.com

Password: ●●●●●●●

Cancel Back Sign In

You'll get an error, type in the "User Name," "Password," "Incoming Mail Server" and "Outgoing Mail Server"

Click "Sign In"

**@ Add a Mail account**

To get started, fill out the following information:

Email Address: techsupport@manti.com

User Name: techsupport@manti.com

Password: ●●●●●●●

Account Type: IMAP

Incoming Mail Server: imap.bluetie.com

Outgoing Mail Server: smtp.bluetie.com

Unable to verify account name or password.

Cancel Back Sign In

Click "Done"

