



FREE – PLEASE TAKE ONE | April 2023

## In This Issue:

### **PAGE 1**

MTCC Hero  
Website Easter Egg Hunt

### **PAGE 2**

TV Price Increases  
Local Business Spotlight  
Movies in the Park  
Save up to \$50 EVERY MONTH

### **PAGE 3**

Affordable Internet  
ConnectXt  
FiberGuard End of Life  
DIRECTV STREAM

### **APRIL HOLIDAYS**

01 – April Fool's Day  
09 – Easter Sunday  
17 – Tax Day  
22 – Earth Day  
28 – Arbor Day

A graphic with a blue background and white diagonal lines. On the left is a black silhouette of a superhero with a green cape and a green 'M' logo on her chest. To the right, the text reads: 'THANK YOU FOR BEING AN MTCC HERO!' in large white letters, followed by 'Our MTCC Hero for March was JEANNIE WILCOX' in white. Below that, a testimonial in white text says: 'Jeannie had a not-so-great experience with one of our competitors, **came back** to us, and has been **recommending** people to us every chance she gets!'. At the bottom, it says 'Thanks for being an MTCC Hero Jeannie!' and 'Find out how you can be an MTCC Hero at [manti.com/heroes](http://manti.com/heroes)'.

**THANK YOU FOR BEING AN**  
**MTCC HERO!**

Our MTCC Hero for March was  
**JEANNIE WILCOX**

Jeannie had a not-so-great experience with one of our competitors, **came back** to us, and has been **recommending** people to us every chance she gets!

**Thanks** for being an **MTCC Hero** Jeannie!

Find out how you can be an MTCC Hero at [manti.com/heroes](http://manti.com/heroes)



**Hoppy Easter!**  
Sunday, April 9

A graphic with a light blue background and a green grassy foreground. It features several colorful Easter eggs and white lilies. The text reads: 'Annual Website Easter Egg Hunt' in a large, dark font, followed by 'April 3-7' and 'Visit [manti.com/easter](http://manti.com/easter) for details.' The MTCC logo is in the bottom right corner.

Annual  
**Website Easter Egg Hunt**

April 3-7

Visit [manti.com/easter](http://manti.com/easter) for details.

## TV Price Increases

On April 1, pricing for our MTCC TV packages will go up.

The major networks charge us a per-subscriber rate that we must pay to carry their channels. These rates go up every year, which means we are forced to raise our rates to cover our costs.

The new prices will be:

\$52.95 – SimplyTV  
\$122.95 – MTCC Basic  
\$132.95 – MTCC Expanded  
\$184.95 – MTCC Total Choice

HD Channels are included on all MTCC TV packages.

For information about how contract negotiations work visit:

[Tvonmyside.com](http://Tvonmyside.com)

Local Business

# SPOTLIGHT



**CUSTOM**  
ELECTRICAL

Residential - Commercial  
Industrial - Solar

**Utah's Electrical Professionals**

[customservices.com](http://customservices.com)

**435-283-4975**

MTCC's  
**Movies**  
in the **Park**

Return  
this  
**Summer!**

[manti.com/movies](http://manti.com/movies)



**MTCC**  
Connecting Your Life

SAVE up to

**\$50**

EVERY  
MONTH

[manti.com/bringafriend](http://manti.com/bringafriend)

# Stay Connected.

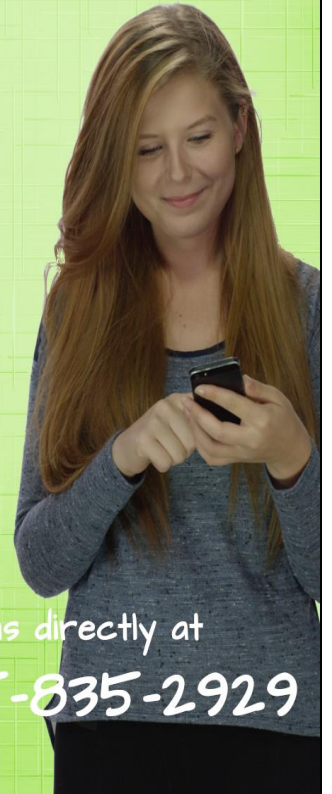
The Affordable Connectivity Program helps low income households pay for broadband service.

[manti.com/acp](http://manti.com/acp)



# ConnectTEXT

Have a tech question?



Text us directly at  
**435-835-2929**

## FiberGuard

We have been notified that as of March 31st, all Router Limits products, including our FiberGuard service will no longer be supported and will stop functioning.

Bark (the new owner) has notified all those affected via email with what options are available to them.

For information visit:  
**bark.us**



# DIRECTV stream

THE BEST OF LIVE TV & ON DEMAND  
ON ALL YOUR FAVORITE SCREENS

**435-835-2929**  
[manti.com/directv-stream](http://manti.com/directv-stream)

