

CONNECT.



Home of the **BRAVE**



FREE – PLEASE TAKE ONE | May 2022

In This Issue:

PAGE 1

New Referral Program!
Happy Mother's Day!

PAGE 2

Important Notices
Free Wi-Fi Summer
DIRECTV STREAM

PAGE 3

Affordable Connectivity (ACP)
ConnectXt
Watch TV Everywhere
Movies in the Park

HOLIDAYS IN MAY

05 – Cinco de Mayo
08 – Mother's Day
08 – V-E Day
21 – Armed Forces Day
26 – Sally Ride Day
30 – Memorial Day

Bring your friends
& Save
up to **\$50**
EVERY MONTH!
manti.com/bring-a-friend

VMTCC
Connecting your life



Our Offices Will Be Closed
Monday, May 30th



Important Notices

Battery Back-up

When we install Fiber-to-the-Home, we install a battery backup unit so that phones will still work in the event of a power outage. The battery in this unit lasts up to 8 hours.

You will not be able to call 9-1-1 Emergency Services after the battery drains, or if you do not have a battery backup unit.

For up to 24 hours of operation during a power outage, you can buy your own battery at local retailers or online.

Please call us at **435-835-2929** with any questions.

Do Not Call List

Placing your residential phone number on the National Do Not Call Registry requires most telemarketers to remove it from their call lists.

You may, however, continue to receive calls from charities, political organizations, some telephone surveyors, and the companies with which you have a business relationship.

Register for free by calling **1-888-382-1222** from the phone number you wish to register or go to www.donotcall.gov.

For more info visit ftc.gov.

Internet Filtering

We no longer automatically filter internet content. If you would like options to do so, we recommend our **FiberGuard** or **Techlink Managed Mesh** Wi-Fi services with parental controls.

For information please visit: manti.com/internet

Free Wi-Fi Summer
Memorial Day to Labor Day

Enjoy Free Wi-Fi at these locations:

- Manti City Park - Manti Aquatic Center
- Manti Sports Complex - Sterling Town Park
- Sanpete County Fairgrounds
- Ephraim Ball Park - Ephraim Canyon View Park

MTCC
Connecting your Life

The advertisement features a vibrant background with a sun rising over green hills, with several Wi-Fi signal icons scattered across the scene.

DIRECTV
stream

THE BEST OF LIVE TV & ON DEMAND
ON ALL YOUR FAVORITE SCREENS

435-835-2929
manti.com/directv-stream

MTCC | **DIRECTV AUTHORIZED DEALER**
Connecting Your Life

The advertisement has a dark blue background with light blue diagonal streaks. It includes the DIRECTV logo and the MTCC logo.

Stay Connected.

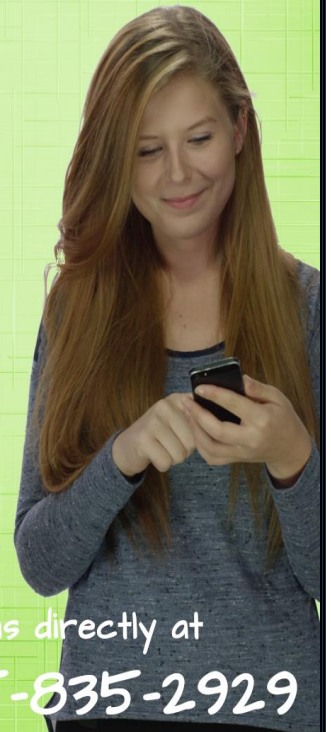
The Affordable Connectivity Program helps low income households pay for broadband service.

manti.com/acp



Connect **TEXT**

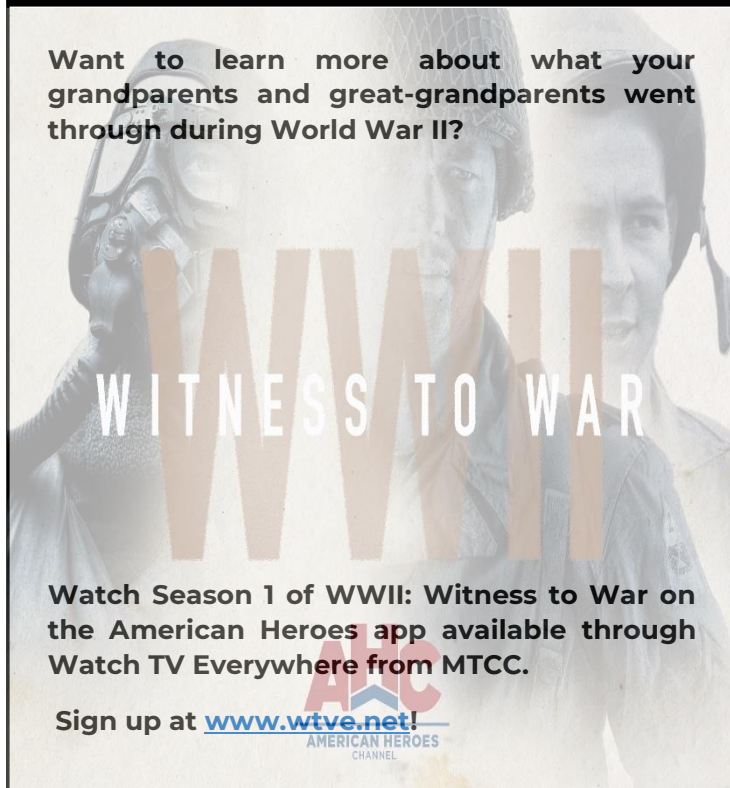
Have a tech question?



Text us directly at
435-835-2929

Watch TV Everywhere

Want to learn more about what your grandparents and great-grandparents went through during World War II?



Watch Season 1 of WWII: Witness to War on the American Heroes app available through Watch TV Everywhere from MTCC.

Sign up at www.wtve.net!

A promotional image for 'MTCC Movies in the Dark'. The background is a textured blue and white pattern. At the top, the MTCC logo is followed by 'MOVIES in the Dark' in large, white, serif font. Below that, the text 'Return this Summer!' is written in a bold, white, sans-serif font. At the bottom, the website 'manti.com/movies' is listed, followed by the large MTCC logo and the tagline 'Connecting Your Life' in a smaller, white, sans-serif font.

manti.com/movies

MTCC
Connecting Your Life