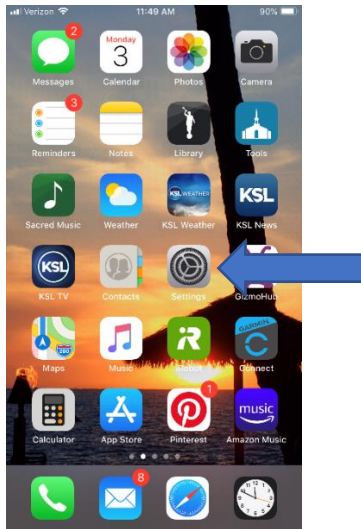
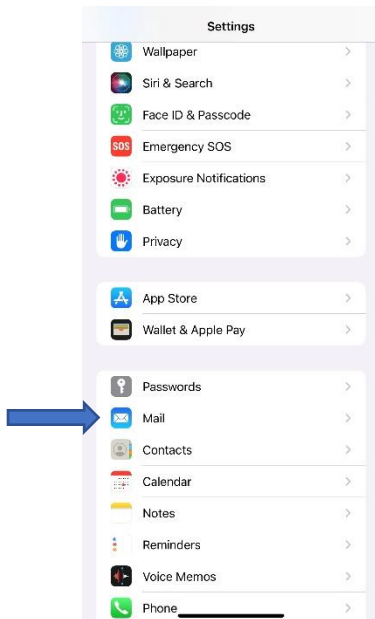


I-Phone/I-Pad Mail Email Setup

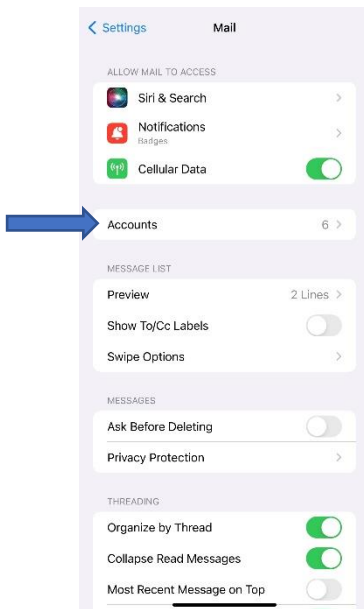
Click on Settings



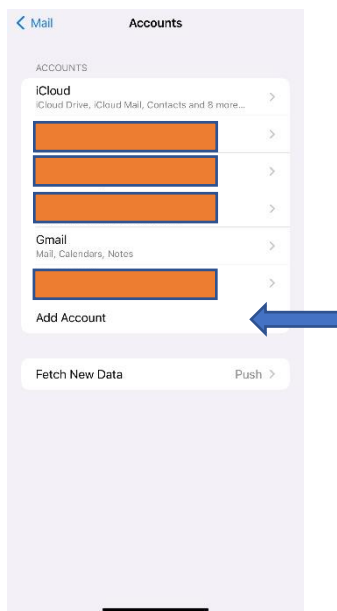
Scroll down and click on "Mail"



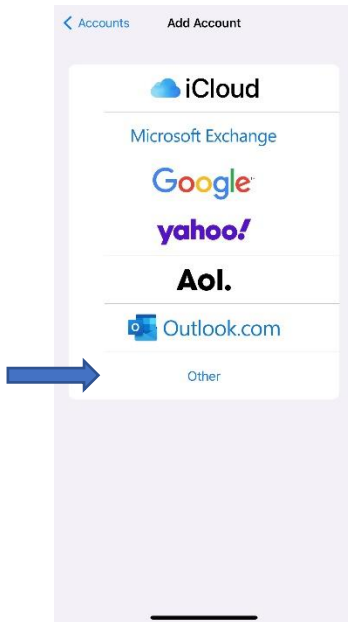
Click on "Accounts"



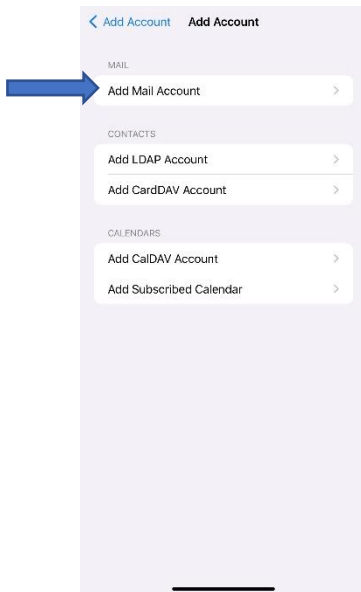
Click on "Add Account"



Click on "Other"



Click on "Add Mail Account"



Type in your name, email address and password, then click “Next”

A screenshot of the 'New Account' setup screen. At the top, there are three buttons: 'Cancel', 'New Account', and 'Next'. Below the buttons are four input fields: 'Name' with the value 'Manti', 'Email' with the value 'youremail@manti.com', 'Password' (which is currently empty), and 'Description' with the value 'Manti'. Three blue arrows point to the 'Name', 'Email', and 'Password' fields. Below the input fields is a keyboard with a 'Passwords' indicator and various keys like 'q', 'w', 'e', 'r', 't', 'y', 'u', 'i', 'o', 'p', 'a', 's', 'd', 'f', 'g', 'h', 'j', 'k', 'l', 'z', 'x', 'c', 'v', 'b', 'n', 'm', '123', 'space', '@', '.', and 'return'.

Under “Incoming Mail Server” type in the “Host Name” field: “imap.bluetie.com”

In the “User Name” field type in your email address

In the “Password” field, type in your email password

Under “Outgoing Mail Server” type in the “Host Name” field: “smtp.bluetie.com”

In the “User Name” field type in your email address

In the “Password” field, type in your email password

Then click “Next”

A screenshot of the 'New Account' setup screen, showing the 'Incoming Mail Server' and 'Outgoing Mail Server' sections. At the top, there are three buttons: 'Cancel', 'New Account', and 'Next'. Below the buttons are two radio buttons: 'IMAP' (selected) and 'POP'. Below the radio buttons are four input fields: 'Name' with the value 'Manti', 'Email' with the value 'youremail@manti.com', 'Description' with the value 'Manti', and a section for 'INCOMING MAIL SERVER'. The 'INCOMING MAIL SERVER' section has three input fields: 'Host Name' with the value 'imap.bluetie.com', 'User Name' with the value 'youremail@manti.com', and 'Password' (which is currently empty). Below the 'INCOMING MAIL SERVER' section is a section for 'OUTGOING MAIL SERVER'. The 'OUTGOING MAIL SERVER' section has three input fields: 'Host Name' with the value 'smtp.bluetie.com', 'User Name' with the value 'youremail@manti.com', and 'Password' (which is currently empty). A blue arrow points to the 'Next' button. Three blue arrows point to the 'Host Name', 'User Name', and 'Password' fields of the 'INCOMING MAIL SERVER' section. Three blue arrows point to the 'Host Name', 'User Name', and 'Password' fields of the 'OUTGOING MAIL SERVER' section.